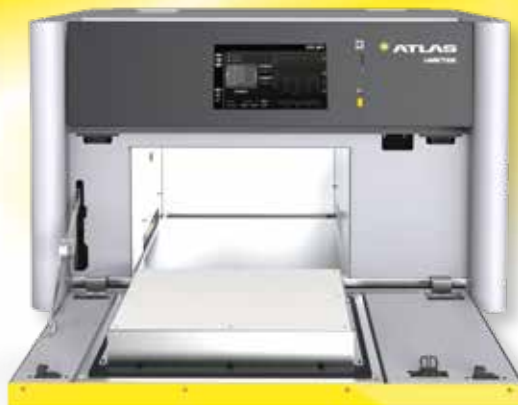


SUNTEST® XLS

The large benchtop unit for weathering, color light fastness, and photostability testing

SUNTEST XLS sets a new standard for accelerated weathering testing. Built on 50 years of expertise in benchtop weathering testing, it can test all types of products:

- Polymers
- Textiles
- Coatings
- Packaging & Printed Matters
- Electronics
- Cosmetics
- Sealants
- Pharmaceuticals
- Food & Beverage



KEY FEATURES

- 1170 cm² exposure area
- Switchable controls at 300-400/340 nm, or 300-800 nm/Lux
- BST or BPT surface temperature control options
- Specimen wetting by water spray or immersion
- Air chiller option
- Irradiance and temperature setpoint monitoring
- WXView II compatible for online DAQ
- Large test library incl. 11 most used weathering tests

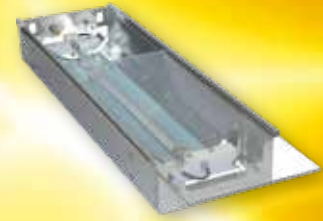


Testing Technology

Accurate control of the elements is key for weathering testing

Spectrum Quality

Atlas optical Daylight and Window Glass filters provide relative spectral irradiance according to ISO 4892-2. The majority of optical filters for the SUNTEST is non-aging. Means they produce the same high spectrum quality as long as they stay in shape.



Irradiance

The Atlas SUNSENSIV irradiance control system constantly monitors the lamp output. Its patented technology allows monitoring of two different wavelengths: 300-400 nm / 340 nm or alternatively 300-800 nm / Lux.



Temperature

The most relevant temperature in weathering testing is the specimen surface temperature, because it drives degradation rates. A black panel / black standard is used to control it. Since it is black it represents the upper end of possible surface temperatures.



Humidity

Humidity control adds precision to weathering testing. Therefore, it is required by many weathering test methods, especially automotive. Due to size, XLS comes only with an CAT/RH sensor to monitor both.

Water Spray / Water Immersion

To simulate the damaging effects of water, an optional specimen spray or immersion unit is available.



Specifications

	SUNTEST XLS
Dimension (WxDxH)	90x54x62 cm
Instrument weight	90 kg
Air-cooled xenon lamp	1700 W
Specimen tray size (LxW)	39x30 cm
Exposure area	1170 cm²
Max. load	3 kg
Distance test tray - xenon lamp	44 cm
CE, UL, ISO, EN, CSA, UKCA	yes
Electrical Requirements 208 - 230 V	1P/N/PE, 32 A, 3 wire

Atlas offers more than testing instruments. From technical advice to final test method implementation, Atlas provides the support that you need when determining the right weathering testing solution for your products. For more information, please contact your local Atlas sales office or visit us at www.atlas-mts.com.

Atlas Material Testing Technology LLC
(p) +1.773.327.4520

www.atlas-mts.com

Atlas Material Testing Technology GmbH
(p) +49.60 51.707.140
Email: atlas.info@ametec.com

www.atlas-mts.de

Specifications, features and standards are subject to change without notice.

© 2025 Atlas Material Testing Technology GmbH
All rights reserved. 06/25
Pub. No. 56353131